

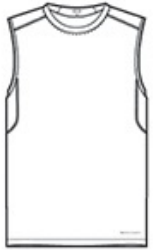


STAY-COOL WICKING
 ULTRA-BREATHABLE
 FLATLOCK SEAMS FOR COMFORT
 REFLECTIVE DETAILS

- 4-ounce, 100% poly jersey body with stay-cool wicking technology
- 4.1-ounce, 100% poly mesh back panel
- Self-fabric collar
- Reflective O heat transfer at back neck
- Reflective stacked O heat transfers at lower back panels
- OGIO Endurance heat transfer label for tag-free comfort
- Reflective O Endurance heat transfer at front left hem

CARE INSTRUCTIONS

Machine wash cold with like colors. Do not bleach. Do not use fabric softener. Tumble dry low, remove promptly. Cool iron if needed. Do not dry clean.



front



back

HOW TO MEASURE



CHEST

With arms down at sides, measure around the upper body, under arms and over the fullest part of the chest.

SIZE CHART

	XS	S	M	L	XL	2XL	3XL	4XL
Chest	32-34	35-37	38-40	41-43	44-46	47-49	50-53	54-57

COLOR INFORMATION



Blacktop PMS HEATHERED Electric Blue PMS HEATHERED Gear Grey PMS HEATHERED